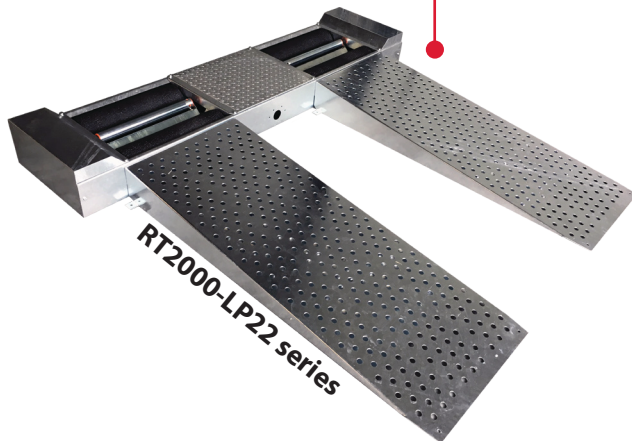
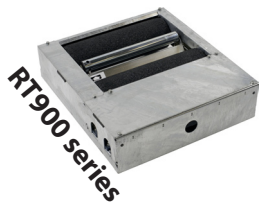
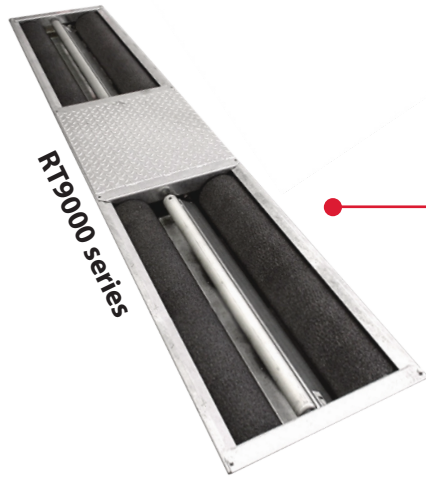
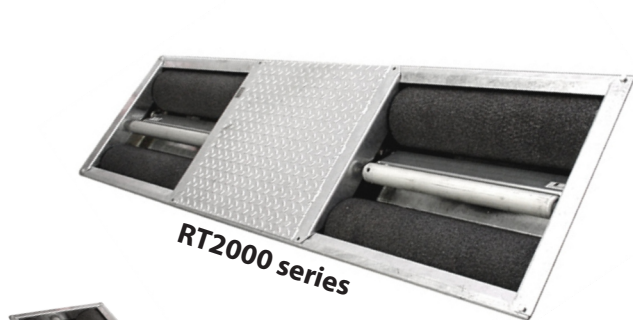


The **R501** is the **Altus**® analogue display for roller brake testers. Multiple configurations of floor units, peripherals and accessories can be connected to create a test lane for passenger cars and light commercial vehicles exactly adapted to the needs and possibilities in your workshop. The R501 is designed in such a way that all electronics are inside the read-out unit. Therefore, no separate relay boxes necessary!

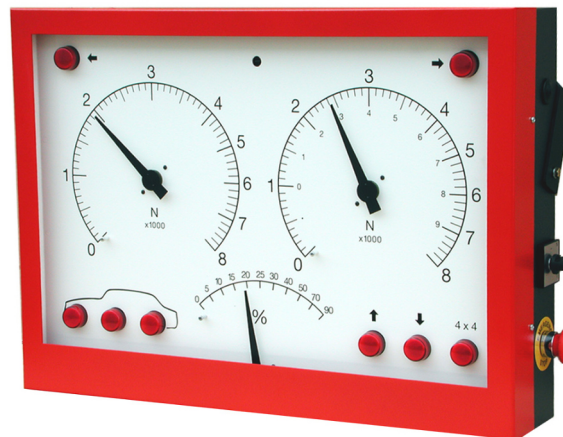


R501 standard features

- ▲ Brake difference indication left/right per axle.
- ▲ Memory for storage of test results for service- and parking brake.
- ▲ Wheel lock indication lamps for left and right.
- ▲ Brake efficiency calculation for service- and parking brake after manual weight input or automatic calculation through an optional integrated weighing system.
- ▲ Recalling off all values and brake efficiencies.
- ▲ Ovality & rolling resistance measurement.
- ▲ Fully automatic test program.

R501

(Standard for 4x4 testing)



Display dimensions: 635 x 465 x 165 mm (W x H x D)

Standard supplied

- ▲ Infra-red remote control hand set.
- ▲ 4x4 reversible roller kit.
- ▲ Wall bracket.



Pointers (N)

Brake force scale for the left and right wheel. On the right scale the indication for manual weight input is presented.

Pointer (%)

For the presentation of differences left/right of an axle as well as brake efficiencies for the service brake and parking brake.

Display options

- ▲ Pivoting wall bracket
- ▲ Pedestal
- ▲ Printer drawer
- ▲ Printer

Technical specifications are subject to changes without notice.
Specifications of floor modules, console components and options, available upon request.

